

SOST Antibody (N-term)
Affinity Purified Rabbit Polyclonal Antibody (Pab)
Catalog # AP17391A**Specification**

SOST Antibody (N-term) - Product Information

Application	WB,E
Primary Accession	O9BOB4
Other Accession	O9BG79 , NP_079513.1
Reactivity	Human, Mouse
Predicted	Bovine
Host	Rabbit
Clonality	Polyclonal
Isotype	Rabbit IgG
Calculated MW	24031
Antigen Region	38-66

SOST Antibody (N-term) - Additional Information**Gene ID** 50964**Other Names**

Sclerostin, SOST

Target/Specificity

This SOST antibody is generated from rabbits immunized with a KLH conjugated synthetic peptide between 38-66 amino acids from the N-terminal region of human SOST.

Dilution

WB~~1:500

E~~Use at an assay dependent concentration.

Format

Purified polyclonal antibody supplied in PBS with 0.09% (W/V) sodium azide. This antibody is purified through a protein A column, followed by peptide affinity purification.

Storage

Maintain refrigerated at 2-8°C for up to 2 weeks. For long term storage store at -20°C in small aliquots to prevent freeze-thaw cycles.

Precautions

SOST Antibody (N-term) is for research use only and not for use in diagnostic or therapeutic procedures.

SOST Antibody (N-term) - Protein Information**Name** SOST ([HGNC:13771](#))

Function Negative regulator of bone growth that acts through inhibition of Wnt signaling and bone formation.

Cellular Location

Secreted, extracellular space, extracellular matrix

Tissue Location

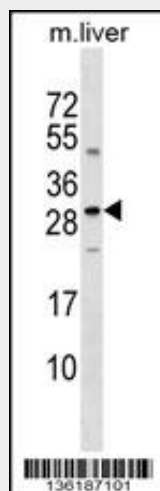
Widely expressed at low levels with highest levels in bone, cartilage, kidney, liver, bone marrow and primary osteoblasts differentiated for 21 days. Detected in the subendothelial layer of the aortic intima (at protein level).

SOST Antibody (N-term) - Protocols

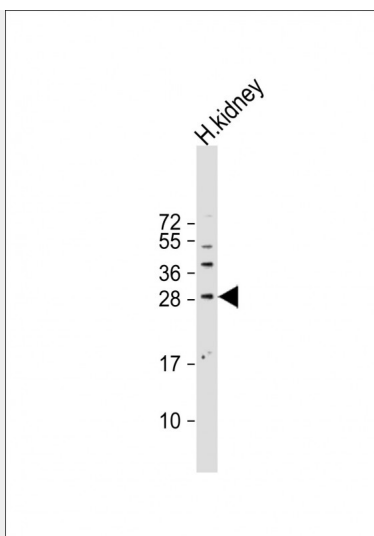
Provided below are standard protocols that you may find useful for product applications.

- [Western Blot](#)
- [Blocking Peptides](#)
- [Dot Blot](#)
- [Immunohistochemistry](#)
- [Immunofluorescence](#)
- [Immunoprecipitation](#)
- [Flow Cytometry](#)
- [Cell Culture](#)

SOST Antibody (N-term) - Images



SOST Antibody (N-term) (Cat. #AP17391a) western blot analysis in mouse liver tissue lysates (35ug/lane). This demonstrates the SOST antibody detected the SOST protein (arrow).



Anti-SOST Antibody (N-term) at 1:500 dilution + human kidney lysate Lysates/proteins at 20 µg per lane. Secondary Goat Anti-Rabbit IgG, (H+L), Peroxidase conjugated at 1/10000 dilution. Predicted band size : 24 kDa Blocking/Dilution buffer: 5% NFDM/TBST.

SOST Antibody (N-term) - Background

Sclerostin is a secreted glycoprotein with a C-terminal cysteine knot-like (CTCK) domain and sequence similarity to the DAN (differential screening-selected gene aberrative in neuroblastoma) family of bone morphogenetic protein (BMP) antagonists. Loss-of-function mutations in this gene are associated with an autosomal-recessive disorder, sclerosteosis, which causes progressive bone overgrowth. A deletion downstream of this gene, which causes reduced sclerostin expression, is associated with a milder form of the disorder called van Buchem disease. [provided by RefSeq].

SOST Antibody (N-term) - References

van Lierop, A.H., et al. Eur. J. Endocrinol. 163(5):833-837(2010)
Liu, J.M., et al. J. Clin. Endocrinol. Metab. 95 (9), E112-E120 (2010) :
Paternoster, L., et al. J. Clin. Endocrinol. Metab. 95(8):3940-3948(2010)
Piters, E., et al. Hum. Mutat. 31 (7), E1526-E1543 (2010) :
Collette, N.M., et al. Dev. Biol. 342(2):169-179(2010)